

Specialty Breads

Stock #	Item # Glazed	Molds Per Pan	Mold Dimensions	Weight Ea., lb.	Overall Size
---------	------------------	------------------	--------------------	--------------------	-----------------

Baguette/French Bread Pans - 16 gauge, .081 dia. perf. aluminum

B5016	43005	3 long	5 ³ / ₁₆ × 26	3.2	18 × 26 × 2
B5017	44005	4 long	3 ⁷ / ₈ × 26	2.8	18 × 26 × 1
B5015	45005	5 long	3 × 26	2.9	18 × 26 × 1
B5018W	45515	5 across	3 × 26	2.9	18 × 26 × 1
B5018	45505	5 across	3 ⁷ / ₈ × 18	3.1	18 × 26 × 1
B5019	46005	6 long	21 ³ / ₃₂ × 26	3.1	18 × 26 × 1

New

Stock #	Item # Glazed	Molds Per Pan	Mold Dimensions (inches)			Weight Each, lb.	Overall Size
			Top (In)	Bottom (Out)	Width (Top) Depth		

Sub Sandwich Roll Pans - 16 gauge perforated aluminum

Full-sized with 10 individual flat-bottomed perf. molds, each with endcaps

40010	40010	10	12 ¹ / ₂	2 ³ / ₈	3	2 ³ / ₃₂	4.1	18 × 25 ⁵ / ₁₆ × 1
-------	-------	----	--------------------------------	-------------------------------	---	--------------------------------	-----	--

Half-sized with 5 individual flat-bottomed perf. molds, each with endcaps

250-B	42505	5	12 ¹ / ₂	2 ³ / ₈	3	2 ³ / ₃₂	1.9	18 × 12 ³ / ₄ × 1
-------	-------	---	--------------------------------	-------------------------------	---	--------------------------------	-----	---

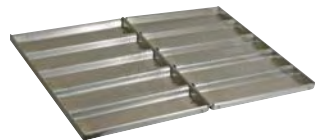
Stock #	Item # w/SB&G	Arrangement	Capacity oz.	Top Inside	Bottom Outside	Depth	Centers		Overall Size
							L	W	

Mini-loaf Pans - aluminized steel

572-D12	45755	2 rows of 6	6.4*	3 ⁷ / ₈ × 2 ¹ / ₂	3 ¹ / ₂ × 2 ¹ / ₈	1 ⁵ / ₁₆	3 ¹ / ₈	4 ¹ / ₂	9 ⁷ / ₈ × 19 ¹ / ₂
572D	45725	4 rows of 7	6.4*	3 ⁷ / ₈ × 2 ¹ / ₂	3 ¹ / ₂ × 2 ¹ / ₈	1 ⁵ / ₁₆	3 ¹ / ₈	4 ¹ / ₂	18 ⁷ / ₈ × 25 ⁷ / ₈
572DS	45727	4 rows of 7	6.4	3 ⁷ / ₈ × 2 ¹ / ₂	3 ¹ / ₂ × 2 ¹ / ₈	1 ⁵ / ₁₆	3 ¹ / ₈	4 ¹ / ₂	17 ⁷ / ₈ × 25 ⁷ / ₈

New

*Liquid volume of mold if filled to brim. Use 60-70% factor for batter weight.



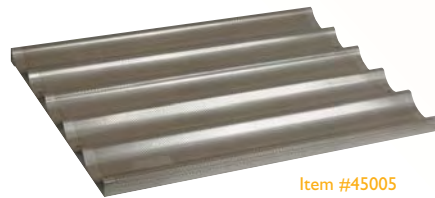
Item #40010



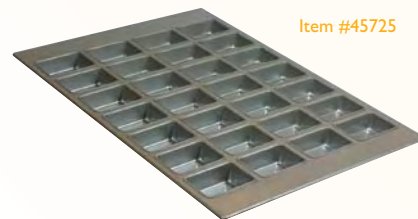
Item #43005



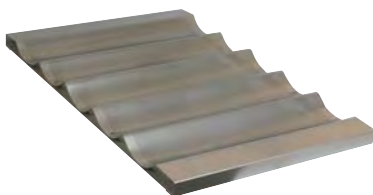
Item #44005



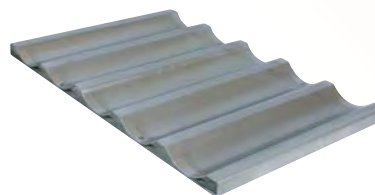
Item #45005



Item #45725



Item #45505



Item #45515



Item #42505

SPECIALTY BREAD

BREADS

SPECIALTY BREAD

Specialty Breads

Stock #	Item # w/SB&G	Individual Pan Size, inches		Weight Per Set, lb.	Overall Size
		Top In length	Diameter		

Crimped Round Bread Pan Set - 4 pans per set - aluminized steel

B8514-1	48514	10	3 ³ / ₄	9.7	10 ⁹ / ₁₆ x 18 ³ / ₈
---------	-------	----	-------------------------------	-----	--

Approximate loaf weight 1 lb.



Item #48514

Stock #	Item # w/SB&G	Individual Pan Size, inches			Weight Per Set, lb.	Overall Size
		Top Inside	Bottom Out	Depth		

Cinnamon/Package Roll Pan Set - 3 pans per set - aluminized steel

B1690	41695	9 ¹ / ₄ x 6 ⁵ / ₈	9 x 6 ³ / ₈	1 ⁷ / ₈	4.5	9 ⁷ / ₈ x 22 ¹ / ₈
-------	-------	---	-----------------------------------	-------------------------------	-----	--



Item #41695

All bun and roll pan and mold specifications have been changed to their actual dimensions from their "known-as" or nominal dimensions. The pan dimensions have not changed, we are now reporting the mold's actual dimensions.

Stock #	Item # w/SB&G	Top Inside	Bottom Outside	Vert. Depth	Arrangement	Weight Ea., lb.	Overall Size
---------	------------------	---------------	-------------------	----------------	-------------	--------------------	-----------------

Hamburger Bun Pans/Muffin Top Pans - aluminized steel

Individual hamburger buns/rolls and muffin tops

B2409	42495	3 ³ / ₄	3 ¹ / ₁₆	1 ³ / ₃₂	4 rows of 6	5.9	17 ¹¹ / ₁₆ x 25 ¹¹ / ₁₆ x 1 ¹ / ₈
B2413*	42345	4 ¹ / ₄	3 ³ / ₈	1/2	4 rows of 6	6.6	19 ¹ / ₂ x 28 ³ / ₄ x 1 ¹ / ₈
B2402	42425	4 ¹ / ₈	3 ⁷ / ₈	1/2	3 rows of 5	5.4	17 ¹¹ / ₁₆ x 25 ¹¹ / ₁₆ x 1 ¹ / ₈

Clustered hamburger buns/rolls - 4 buns/rolls per cluster

B2404	42445	3 ³ / ₄	3 ³ / ₈	1/2	6 clusters of 4	6.0	17 ¹¹ / ₁₆ x 25 ¹¹ / ₁₆ x 1 ¹ / ₈
-------	-------	-------------------------------	-------------------------------	-----	-----------------	-----	---

* Will not fit 18 x 26 rack

Stock #	Item # w/SB&G	Top Inside	Bottom Outside	Vert. Depth	Arrangement	Weight Ea., lb.	Overall Size
---------	------------------	---------------	-------------------	----------------	-------------	--------------------	-----------------

Hot Dog Bun Pans - aluminized steel

Individual hot dog buns/rolls

B2410*	42415	6 x 2 ¹ / ₁₆	5 ¹ / ₂ x 1 ⁹ / ₁₆	1/2	4 rows of 6	5.7	16 ³ / ₄ x 27 ³ / ₄ x 1
B2403	42435	6 x 2 ¹ / ₁₆	5 ¹ / ₂ x 1 ⁹ / ₁₆	1/2	3 rows of 6	5.9	17 ¹¹ / ₁₆ x 25 ¹¹ / ₁₆ x 1 ¹ / ₈

* Will not fit 18 x 26 rack



Item #42425



Item #42445

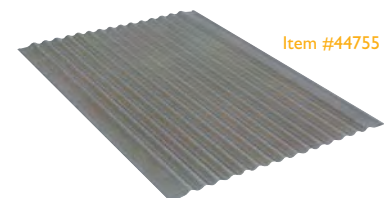


Item #42435

Stock #	Item # w/SB&G	Grooves Width	Groove Ea., lb.	Weight Size, inches	Overall
---------	------------------	------------------	--------------------	------------------------	---------

Breadstick Pan - 14 gauge aluminum

475	44755	14	9/16	3.5	17 ⁷ / ₈ x 25 ⁷ / ₈
-----	-------	----	------	-----	---



Item #44755